

Instruction of Using Veterinary SpO₂ Probes

Choosing Veterinary SpO₂ Probe

Vj g'Handheld Pulse Oximeter is equipped with special probes for monitoring animals. Now two types of SpO₂ probes with three kinds of adapters are provided, one is the “Y” type probe with clear coating on the sensor, which is suitable for big animals or where the tissue is thick or dark, the other one is the “Y” type probe with opaque coating on the sensor, which is suitable for small animals or where the tissue is thin or transparent. The three kinds of probe adapters are big clip, small clip and rubber wrapper respectively, which can be used on different measuring site accordingly, such as tongue, ear, leg or tail. Please choose the appropriate probe and adapter according to its character and the measuring site.

SpO₂ Probe Connection

Connection of Big Clip

1. Take off the two rubber jackets from the clip;
2. Fix the sensor cable to the clip (**Fig. 1**);
3. Slide one sensor (the side with coating inward) into the fixing slot from the clip opening to the stop at the end of the slot (**Fig. 2**), and then fix the other sensor.
4. Install the two rubber jackets to the clip (**Fig. 3**).

Connection of Small Clip

Follow the step 1, step 2 and step 4 mentioned in Section Connection of Big Clip and refer to **Fig. 4** and **Fig. 5**.

Connection of Rubber Wrapper

1. Spread the rubber wrapper, there are two fixing slots (**Fig. 6**).
2. Hold the rubber wrapper and press the sensor into one of the fixing slots (**Fig. 7**), then fix the other sensor.

Note: following the connecting procedure in reverse to detach the sensor and do not pull it with force.

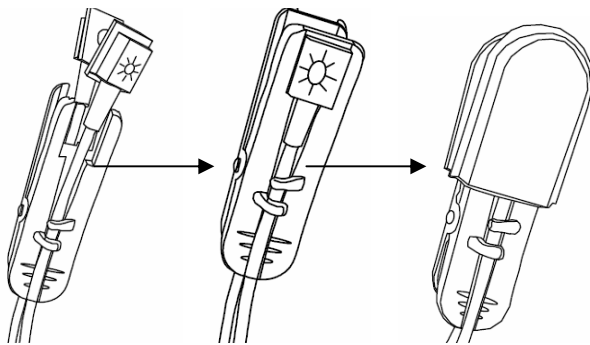


Fig. 1

Fig. 2

Fig. 3

Big Clip Connection

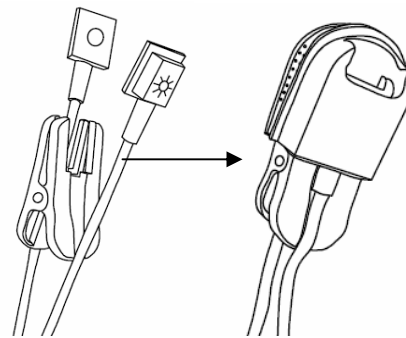


Fig. 4

Fig. 5

Small Clip Connection

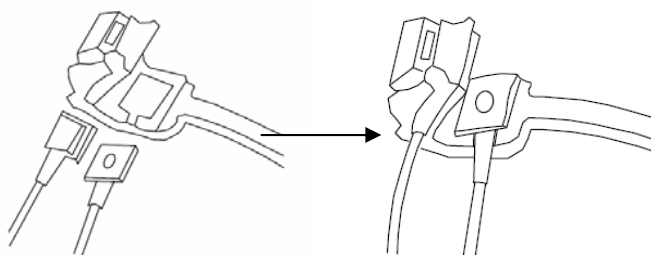
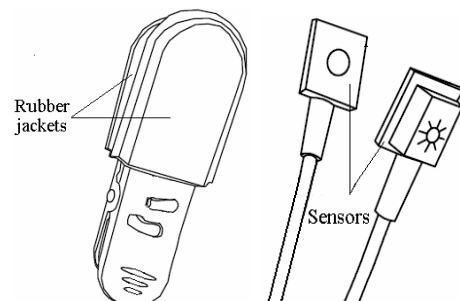


Fig. 6

Fig. 7

Rubber Wrapper Connection



Clip and Sensor

Instruction of Using Veterinary SpO₂ Probes

Placement of Veterinary SpO₂ Probe

As a general rule, measuring SpO₂ for animals is performed when the animal is under anaesthesia, and the optimal measuring site is their tongues. Normally the animal's tongue will slip out after anaesthesia. At first, clip the probe on its tongue (**Fig. 8**). Then, according to perfusion index (PI) value (greater PI is better) you can find an appropriate site.

Besides the tongue, you can clip or wrap the SpO₂ sensor onto other places such as legs or tail (**Fig.9**). Since animal hair will decrease the sensitivity or even make the measurement failure, please always choose the place with less hair under the sensor. If necessary, shave off the hair on the measuring site.

Tips for SpO₂ Monitoring

If there is strong ambient light interference, you can use opaque thing to cover the measuring site and the probe. By doing so, measurement distortion may be avoided.

The lights including surgery lamp, halogen lamp, fluorescent lamp and infrared heating lamp can also cause measurement distortion. In such condition, you can use solid black thing to cover the measuring site and the probe.

If PI value is less than 1%, the probe with clear coating on the sensor is recommended for a better measurement result.



Fig. 8

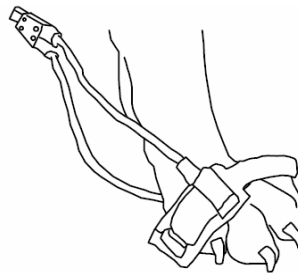


Fig. 9
